



PROJECT		REF		REV	ITEM CODE	
LOCATION		DATE			PAGE	

SANITARY WARE SPECIFICATION SHEET

Item Descriptions	Stern (Israel) "Extreme Plus" Chrome plated deck mounted extended body sensor faucet in 9V DC Supply with IP67 waterproof battery box	<p>Illustration/ Drawing</p>
Dimensions	L103 x W44 x H365 mm	
Model	Extreme Plus B	
Code Number	237250	
Finish	Chrome Plated	
Supplier	Acme Sanitary Ware Co. Ltd Mr. Eric Wong/ Mr. Don Yuen	
Contact Tel/Fax	(852) 2388-7171 / (852) 2710-8012	
E-mail	acme@acmesanitary.com.hk	
Website	www.acmesanitary.com.hk	

EXTREME PLUS B Ref # 237250

Touch-free electronic faucet for deck-mounted installations. Activated by infrared sensor. Tall version of counter top washbasins. For cold or premixed water. Filters included. Chrome plated body, other finishes available. Includes a low battery indicator. Latching solenoid valve is located above deck inside the product for added vandal protection. Regular faucet installation with simple battery connection. Adjustable settings by remote control: sensor range, security time, delay in, delay out, on-off and reset to factory settings. 24 hour mandatory hygiene flush available upon request.

Application:

Deck-mounted faucet. Combining an elegant minimalist design with anti-vandal features. Easy installation. Long lasting even in the harshest installation sites. Helps washrooms stay clean and saves water. Prevents cross contamination. Ideal for stadiums, train and bus stations and highway rest stops.

Use:

Touch-free electronic faucet. The faucet is automatically activated when users place their hands in the sensor range and stops when the users remove their hands.

PRODUCT AT A GLANCE

Installation	Lavatory mounted		
Power Supply	• 9V external battery box • 12V transformer		
Operating pressure	0.5-8.0 bar / 7.0-116.0 PSI		
Water supply	Cold and premixed water		
Water flow	6 LPM / 1.58 GPM - SSR PCA stream		
Water Saving Options	4 LPM / 1 GPM ; 3 LPM / 0.8 GPM 1.89 LPM / 0.5 GPM ; 1.3 LPM 0.35 GPM - PCA spray		
Water temperature	70°C Maximum		
Security Time	90 seconds. Adjustable by remote control		

ORDERING INFORMATION

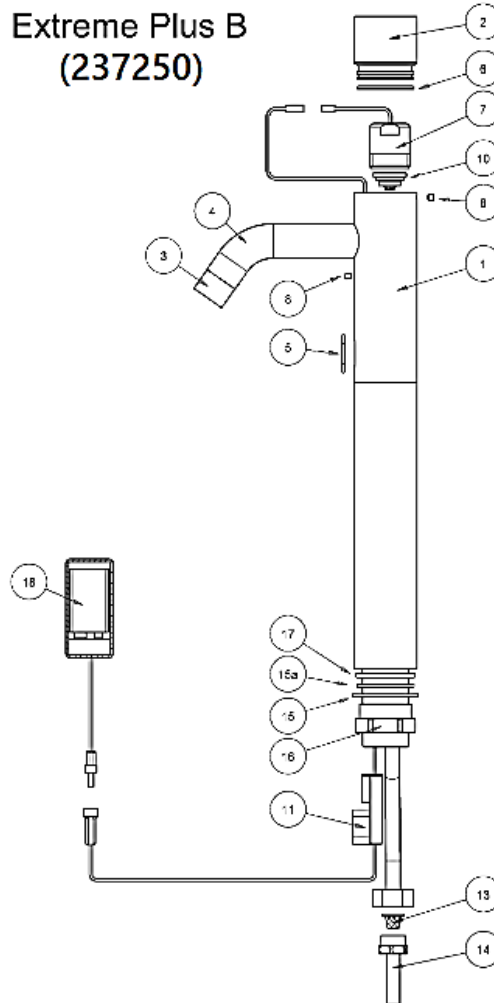
MODEL	CODE	POWER	
EXTREME PLUS B	237250	9V battery	Tall body 365 mm \ 14.37" for counter top wash basins
EXTREME PLUS E	237350	12V transformer	
EXTREME PLUS LB	237251	9V battery	Tall body 365 mm \ 14.37" for counter top wash basins
EXTREME PLUS LE	237351	12V transformer	Long spout 176 mm \ 6.92"

- Installation:**
Lavatory mounted
- Water supply:**
Cold or premixed water (1 inlet)
- Water temperature:**
Max 70 °C
- Operating pressure:**
0.5 - 8.0 bar
- Power source:**
9V Alkaline battery
- Stern Soap & Water:**
Extreme matching soap dispenser

* All information of the above is for the reference only. No prior notice is made if any changes.



SPARE PARTS LIST



Quantity	Part Number	Description	Cat. No.
-	-	Seals and Screws Kit	07210023
1	6	O-ring	
1	17	O-ring	
1	5	O-ring	
1	15a	Gasket	
2	8	Screw	
-	-	Sensor Kit	07220197
1	11	Infra Red Sensor	
1	5	O-ring	
-	-	Filter Adapter Kit	07212001
1	13	Filter	
1	14	Nipple	
-	-	Cover Kit	07270004
1	2	Cover	
1	6	O-ring	
-	-	Solenoid Valve Kit	07230003
1	7	Solenoid valve	
1	10	Diaphragm	
	10	Diaphragm	04500001
	18	Battery box	06530018
	18	IP 67 Battery box	06530019

Note: In order to locate the relevant spare part, please check the corresponding parts and part number in the drawing. Minimum order quantity will be required.

** All information of the above is for the reference only. No prior notice is made if any changes.*



ies Department

上打道七號入境事務大樓 48 樓

48/F, Immigration Tower, 7 Gloucester Road, Wan Chai, Hong Kong

本署檔號 : (4) in WSD 3321/2020 T/J(774/2020)
Our ref.
來函檔號 :
Your ref.

電話 :
Tel.
傳真 : 2824 0578
Fax.

11 August 2020

Approval of "STERN" Sensor Taps (General Acceptance No. C20200658)

Your letters ref. BE/L20403/20 and BE/L20431/20 dated 23 June 2020 and 20 July 2020 respectively refer.

Having considered the test report ref. J25246Ar1 issued on 16 July 2020 by Nutek Systems (HK) Ltd., this Authority accepts that the fittings described below comply with, and their use when correctly installed does not contravene, the Waterworks Ordinance and Regulations.

Name of Manufacturer: Y Stern Engineering (1989) Ltd
Country of Origin: Israel
Brand: Stern
Details of Fittings: 3/8" Electronic sensor basin tap
Model: 237250 and 237350
Body Markings: *Stern*
Expiry Date: 23 April 2025



This Authority hereby permits the use of the above fittings in fresh water plumbing systems subject to full adherence to Waterworks installation requirements. In particular, you are required to draw your customers' attention to the following requirement-

"A stop cock or gate valve must be installed at the upstream of the fittings for manual isolation of water supply." AND

"The main voltage operated sensor valve should comply with the electricity safety regulation for applications in bathroom, toilet etc."

A condition of this acceptance is that the fittings to be installed shall be replicas of the samples as certified by the testing agent mentioned above and without modifications. This acceptance may be withdrawn at any time if the standard of the fittings installed fails to meet that of the approved samples or if the fittings are found to be unsuitable for use in fresh water plumbing systems.

This acceptance is only applicable to the main body of the fittings, unless otherwise specified.

For the use of the fittings in any project, the General Acceptance Number of this letter must be quoted as a means of identification of acceptance of the fittings by this Authority.

Should you have any enquiries, please contact our Engineer Mr. Terry KUNG at tel. no. 3583 4086.

Yours faithfully,



(CHAN Chung-kun)

for Director of Water Supplies

Encl.

c.c. WSD 3321/1/82] - without catalogue
 ME/MC] - with soft copy only

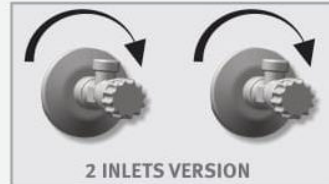


INSTALLATION

STEP 1 – PREPARATION FOR MOUNTING THE FAUCET

1

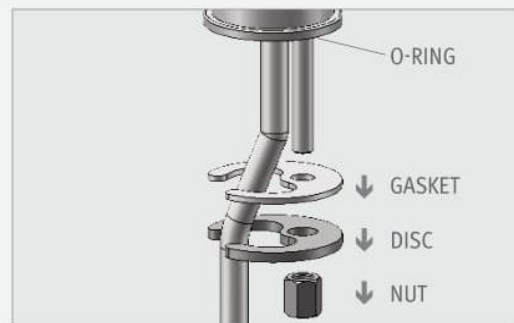
Shut off the water supply.



2 INLETS VERSION

2

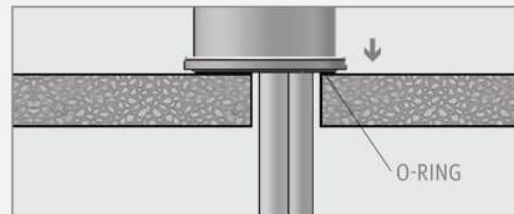
Remove the hexagonal nut, the disk and the gasket. Do not remove the O-ring from the base of the faucet.



STEP 2 – INSTALLING THE FAUCET

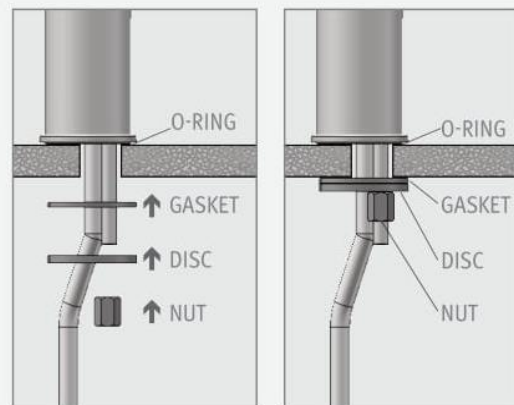
1

Place the faucet with O-ring into the hole in deck or lavatory. Make sure the O-ring is located between the deck or lavatory and the bottom of the faucet.



2

Slide the gasket, disk and hexagonal nut over the flexible hose and secure the faucet into place.





INSTALLATION

STEP 3 – CONNECTING THE WATER SUPPLY

1

Connect the red flexible pipe to the hot water supply and the blue flexible pipe to the cold water supply.



MAKE SURE THAT THE FILTERS ARE INSTALLED BETWEEN THE FLEXIBLE PIPE AND THE SHUT OFF VALVE/ANGLE VALVE (NOT SUPPLIED).

2

Turn on the central water supply and the shut-off valves (angle valves). Check for leaks.

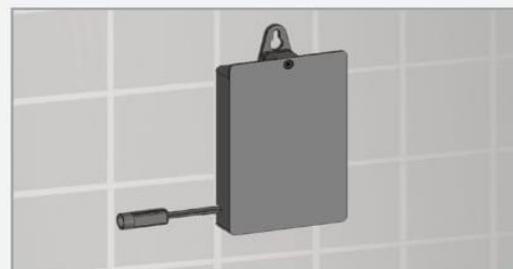


STEP 4 – CONNECTING THE POWER SOURCE

BATTERY VERSION

Install the batteries in the battery box and attach the box to the wall underneath the sink.

The cable connection must point down. (You can use an optional extension cable in order to assemble the battery box up to 3 meters away from the sink.)



TRANSFORMER VERSION

Plug the transformer into the electricity socket and connect the connectors.





TROUBLESHOOTING

PROBLEM	INDICATOR	CAUSE	SOLUTION
No water coming out of the faucet:	1. Sensor flashes continuously when user's hands are within the sensor's range.	Low battery.	Replace battery
	2. LED in the sensor does not flash once when user's hands are within the sensor's range.	1. Range is too short.	Increase the range
		2. Range is too long.	Decrease the range
3. LED in the sensor flashes once when user's hands are within the sensor's range.	3. Battery is completely used up	3. Battery is completely used up	The battery must be replaced.
		4. Unit is in "Security Mode"*	
	5. Sensor is picking up reflections from the washbasin or another object.	Eliminate cause of reflection.	
Water flow from spout does not stop:	1. Sensor flashes once when user's hands are within the sensor's range.	1. Connectors between the electronic unit and solenoid are disconnected.	Connect the electronic unit connectors to the solenoid. Solenoid is located inside the body.
		2. The water supply pressure is higher than 8 bar.	Reduce the supply water pressure.
	3. The water supply pressure is under 8 bars and yet the pressure in the faucet's body is higher. This situation could be caused by a sudden increase in the water supply pressure that the back check prevents from dropping, even after water supply pressure drops under 8 bars.	Shut off water supply and unscrew one of the flexible pipes in order to reduce the pressure that blocks the product.	
Water flow diminished	2. LED in the sensor does not flash once when user's hands are within the sensor's range.	1. Sensor is dirty or covered.**	Clean or eliminate case of interference.
		2. Sensor is picking up reflections from the washbasin or another object.	Decrease the range or eliminate cause of reflection.
Water flow diminished		Filter or aerator is clogged or the solenoid is dirty.	Remove, clean, re-install

* "Security Mode": If the sensor is covered for more than 90 sec. the faucet will automatically shut off water flow. In order to return to normal operation, remove any blockage.

** In this case, the water flow will stop anyway after 90 seconds because of the security time.